



# AZENIS FK453

AZENIS FK453

## FLAGSHIP ULTRA HIGH PERFORMANCE

The **AZENIS FK453** is Falken's latest generation of ultra high performance tyre available in a wide array of sizes from 17 to 22-inch rim diameters. The size range includes popular staggered fitments suitable for high-end vehicles. In addition, the FK453 features the latest developments in noise-absorption technology which helps provide a quiet and comfortable ride. A silica-enriched compound is utilised for confident dry and wet performance. Rated with W, Y, and (Y) speed ratings, the AZENIS FK453 is composed of nylon-reinforced layers allowing for enhanced high-speed stability.

**AVAILABLE TYRE SIZES**  
70 SIZES

**AVAILABLE RIM SIZING**  
17" – 22"

**SPEED RATING**  
W • Y • (Y)

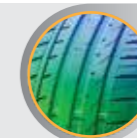
### PERFORMANCE RATINGS\*



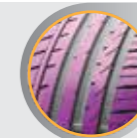
#### POPULAR FITMENTS:

- HSV
- FPV
- Holden Commodore & Utes
- Ford Falcon & Utes
- BMW 3, 4, 5 & M Series
- Ford Focus RS
- Subaru Impreza WRX & STI
- Holden Calais
- Volkswagen Passat
- Volkswagen Golf
- Mercedes-Benz all
- Honda Civic
- Audi all
- Lexus all
- Honda Accord
- Hyundai Genesis
- Infiniti all
- Porsche all

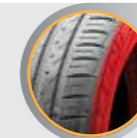
### TYRE HIGHLIGHTS



**SILICA-ENRICHED COMPOUND**  
Designed and tested to meet the demands of Australian roads, the silica-based compound provides superior traction and grip in wet and dry conditions.



**ASYMMETRIC VARIABLE TREAD DESIGN**  
With large outside shoulder blocks provide enhanced wet and dry handling while reducing tyre noise.



**RIGID CARCASS**  
Retains the tyre profile during some of the most extreme driving conditions, helping to enhance high-speed stability and handling.



**THREE WIDE CIRCUMFERENTIAL GROOVES**  
Effectively evacuate water and significantly enhance hydroplaning resistance for enhanced wet handling.

### SIZES AND SPECIFICATIONS

[NEXT PAGE](#)

\*Performance ratings are based on a scale of 1 to 5 with 5 being best. Ratings are in comparison to other Falken Tyres products in the same category.

Product images are for illustrative purposes only. Tread design, technical information and tyre construction subject to change without notice and may vary by size.

