



AZENIS RT615K

AZENIS RT615K

COMPETITION-PROVEN PERFORMANCE

The **AZENIS RT615K** is a championship-winning street tyre for today's sports cars, performance compacts and sedans. With its circuit-spec construction and advanced compound for street and track use, the RT615K confidently maintains grip in both street and track conditions. Through its proprietary technology, the motorsports-inspired 8/32nd tread design and solid center rib provide significant traction and sustains strong grip in dry conditions. Available in 21 sizes from 14 to 18-inch, the RT615K is the track tyre of choice with a UTQG rating of 200 A-A.

AVAILABLE TYRE SIZES
21 SIZES

AVAILABLE RIM SIZING
14" – 18"

SPEED RATING
H • W

PERFORMANCE RATINGS*



POPULAR FITMENTS:

Ford Falcon
Lexus IS
Ford Falcon Ute
BMW 3 Series
Audi TT
Mercedes-Benz E-Class
Volkswagen Golf
Mercedes-Benz CLS-Class
Ford Falcon
Audi A5
BMW Z4
Subaru Impreza WRX & STI
Honda Integra
Honda Civic
Mitsubishi Lancer Evolution
Nissan Skyline
Nissan Silvia & 200SX
Mazda RX-7 & RX-8
Honda S2000

TYRE HIGHLIGHTS



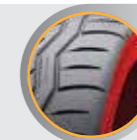
RACE-INSPIRED TREAD COMPOUND
Provides excellent traction in all racing conditions.



MASSIVE SPORT SIDE SHOULDER BLOCKS
Deliver motorsports-level grip and unsurpassed cornering response.



SOLID CENTER RIB
Significantly reduces wheel spin by reducing contact patch void ratio under heavy acceleration.



HIGH-TENSION CARCASS
Increases handling response and high-speed stability.

SIZES AND SPECIFICATIONS

NEXT PAGE

*Performance ratings are based on a scale of 1 to 5 with 5 being best. Ratings are in comparison to other Falken Tyres products in the same category.

Product images are for illustrative purposes only. Tread design, technical information and tyre construction subject to change without notice and may vary by size.

AZENIS RT615K

AZENIS RT615K

COMPETITION-PROVEN PERFORMANCE

Wheel Dia. (in)	M-Code	Width	Series	Wheel Dia.	Size Description	LI/SS	Suggested Rim Width (in)	Rim Width Range (in)	Tread Width (mm)	Section Width (mm)	Tread Depth (mm)	Overall Width (mm)	Overall Diameter (mm)	Max Air (psi)	Static Loaded Radius (mm)	Revs per km	Rolling Circ. (mm)	Rim Protector
14	291465	195	60	14	195/60R14 86H RT615K	86H	6.0	5.5 - 7.0	167	200	6.3	200	590	51	-	-	-	-
15	291467	205	50	15	205/50R15 89W RT615K RF	89W	6.5	5.5 - 7.5	192	209	6.3	209	591	50	-	-	-	Yes
16	291469	205	40	16	205/40R16 83W RT615K RF	83W	7.5	7.0 - 8.0	184	217	6.3	217	572	50	-	-	-	Yes
	291471	215	45	16	215/45R16 86W RT615K	86W	7.0	7.0 - 8.0	202	214	6.3	214	599	51	-	-	-	Yes
	291473	225	50	16	225/50R16 92W RT615K	92W	7.0	6.0 - 8.0	208	229	6.3	229	631	51	-	-	-	Yes
17	291475	205	40	17	205/40R17 84W RT615K RF	84W	7.5	7.0 - 8.0	184	217	6.3	217	595	50	-	-	-	Yes
	291477	215	40	17	215/40R17 87W RT615K RF	87W	7.5	7.0 - 8.5	188	221	6.3	221	606	50	-	-	-	Yes
	291479	215	45	17	215/45R17 87W RT615K	87W	7.0	7.0 - 8.0	202	211	6.3	211	628	51	-	-	-	Yes
	291481	225	45	17	225/45R17 94W RT615K RF	94W	7.5	7.0 - 8.5	212	225	6.3	225	636	50	-	-	-	Yes
	291483	235	40	17	235/40R17 90W RT615K	90W	8.5	8.0 - 9.5	220	243	6.3	243	619	51	-	-	-	Yes
	291485	245	45	17	245/45R17 99W RT615K RF	99W	8.0	7.5 - 9.0	230	243	6.3	243	652	50	-	-	-	Yes
	291487	255	40	17	255/40R17 94W RT615K	94W	9.0	8.5 - 10.0	240	260	6.3	260	634	51	-	-	-	Yes
	291489	275	40	17	275/40R17 98W RT615K	98W	9.5	9.0 - 11.0	254	275	6.3	275	650	51	-	-	-	Yes

Wheel Dia. (in)	M-Code	Width	Series	Wheel Dia.	Size Description	LI/SS	Suggested Rim Width (in)	Rim Width Range (in)	Tread Width (mm)	Section Width (mm)	Tread Depth (mm)	Overall Width (mm)	Overall Diameter (mm)	Max Air (psi)	Static Loaded Radius (mm)	Revs per km	Rolling Circ. (mm)	Rim Protector
18	291491	225	40	18	225/40R18 92W RT615K RF	92W	8.0	7.5 - 9.0	212	236	6.3	236	638	50	-	-	-	Yes
	291493	235	40	18	235/40R18 95W RT615K RF	95W	8.5	8.0 - 9.5	220	243	6.3	243	648	50	-	-	-	Yes
	291495	245	40	18	245/40R18 97W RT615K RF	97W	8.5	8.0 - 9.5	230	249	6.3	249	652	50	-	-	-	Yes
	291497	255	40	18	255/40R18 95W RT615K	95W	9.0	8.5 - 10.0	239.4	260	6.3	260	660	51	-	-	-	Yes
	291499	265	35	18	265/35R18 97W RT615K RF	97W	9.5	9.0 - 10.5	254	272	6.3	272	645	50	-	-	-	Yes
	291501	275	35	18	275/35R18 95W RT615K	95W	9.5	9.0 - 11.0	254	274	6.3	274	651	51	-	-	-	Yes
	291503	295	40	18	295/40R18 103W RT615K	103W	10.5	10.0 - 11.5	276	302	6.3	302	691	51	-	-	-	Yes
	291505	315	30	18	315/30R18 98W RT615K	98W	11.0	10.5 - 11.5	298	316	6.3	316	649	51	-	-	-	Yes