



WILDPEAK AT3W

WILDPEAK A/T AT3W

ALL-TERRAIN, ANY-WEATHER RUGGED CAPABILITY

The **WILDPEAK A/T** is engineered for adventure, any time and in any weather. The tyre combines aggressive off-road ability and rugged terrain driving without compromise on the pavement. An optimised tread design combined with a silica tread compound enables the tyre to excel in three areas: wear, winter, and wet performance. The tyre is packed with technology, from Falken's patented 3D Canyon Sipes to an all-new proprietary lower sidewall. Full-depth sipes and grooves maintain consistent performance and appearance throughout the life of the tyre.

AVAILABLE TYRE SIZES
22 SIZES

AVAILABLE RIM SIZING
15" - 18"

SPEED RATING
S • R • T

PERFORMANCE RATINGS[†]



OUTER APEX SIDEWALL

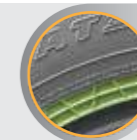
Features a secondary bead apex that acts as a heat shield to protect the internal casing of the tyre, resulting in confident handling and durability with the added benefit of sidewall protection on rough roads and trails.



POPULAR FITMENTS:

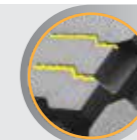
- Toyota LandCruiser
- Nissan Navara
- Ford Ranger
- Toyota HiLux
- Holden Colorado
- Toyota LandCruiser Prado
- Mitsubishi Outlander
- Mitsubishi Triton
- Mazda BT-50
- Holden Rodeo
- Mitsubishi Pajero
- Ford Escape
- Isuzu Ute D-Max
- Toyota FJ Cruiser
- Jeep Wrangler
- Land Rover Defender
- Nissan Patrol
- Hummer H3

TYRE HIGHLIGHTS



HEAT DIFFUSER TECHNOLOGY

In the lower sidewall dissipates heat to protect the internal tyre components. Keeping this critical area of the tyre cool ensures vehicle stability even when towing or carrying heavy loads.



3D CANYON SIPE TECHNOLOGY

Interlocks the shoulders to resist wear from high torque as well as providing additional handling stability.



RUGGED AND RIGID TREAD BLOCKS

Feature support ramps and step-down features that provide tread-pattern rigidity in the contact patch, enhancing vehicle stability and handling while also preventing stones from becoming trapped in the grooves.



AGGRESSIVE UPPER SIDEWALL

Along with offset shoulder blocks protect the tyre from sharp rocks and provide additional off-road traction at low tyre pressures or in off-camber situations.

SIZES AND SPECIFICATIONS

[NEXT PAGE](#)

[†] Performance ratings are based on a scale of 1 to 5 with 5 being best. Ratings are in comparison to other Falken Tyres products in the same category.

Product images are for illustrative purposes only. Tread design, technical information and tyre construction subject to change without notice and may vary by size.

WILDPEAK A/T

ALL-TERRAIN, ANY-WEATHER RUGGED CAPABILITY

WILDPEAK A/T 01
WILDPEAK A/T 02
WILDPEAK A/T AT3W

Wheel Dia. (in)	M-Code	Width	Series	Wheel Dia.	Size Description	LI/SS	Suggested Rim Width (in)	Rim Width Range (in)	Tread Width (mm)	Section Width (mm)	Tread Depth (mm)	Overall Width (mm)	Overall Dia. (mm)	Max Air (psi)	Static Loaded Radius (mm)	Revs per km	Rolling Circ. (mm)	Sidewall Type
15	296789	215	75	15	LT215/75R15 100S WILDPEAK A/T AT01	100S	6.0	5.5 - 7.0	164	213	10.1	216	705	50	327	466	2146	OWL
	323855	235	75	15	235/75R15 109T XL WILDPEAK A/T AT3W	109T	6.5	6.0 - 8.0	184	230	10.9	235	735	50	327	455	2199	RBL
	296809	265	70	15	265/70R15 112T WILDPEAK A/T AT01	112T	8.0	7.0 - 9.0	208	278	10.1	279	751	44	346	439	2279	
	323822			15	31X10.5R15 LT 109S WILDPEAK A/T AT3W	109S	8.5	7.0 - 9.0	208	264	14.1	269	775	50	356	426	2348	RBL
16	296793	205		16	205R16C 110R WILDPEAK A/T AT01	110R	6.0	5.5 - 6.0	150	210	9.6	212	738	65	342	446	2243	
	296825	215	70	16	215/70R16 100T WILDPEAK A/T AT01	100T	6.5	5.5 - 7.0	170	218	9.6	219	708	44	330	463	2159	
	323827	225	75	16	LT225/75R16 115/112S WILDPEAK A/T AT3W 115/112S		6.0	6.0 - 7.0	176	215	13.1	220	744	80	345	442	2263	RBL
	323854	235	70	16	235/70R16 109T XL WILDPEAK A/T AT3W	109T	7.0	6.0 - 8.0	190	238	10.3	243	736	50	330	453	2208	RBL
	323829	235	85	16	LT235/85R16 120/116S WILDPEAK A/T AT3W 120/116S		6.5	6.0 - 7.5	178	231	13.6	236	806	80	371	409	2444	RBL
	303281	245	70	16	LT245/70R16 113Q WILDPEAK A/T AT02	113Q	7.0	6.5 - 7.5	196	252	12.5	254	748	65	347	439	2277	OWL
	323831	245	75	16	LT245/75R16 120/116S WILDPEAK A/T AT3W 120/116S		7.0	6.5 - 8.0	191	242	13.6	247	774	80	358	425	2353	RBL
	296837	255	65	16	255/65R16 109T WILDPEAK A/T AT01	109T	7.5	7.0 - 9.0	202	262	10.1	263	737	44	340	448	2230	
	323870	255	70	16	255/70R16 115T XL WILDPEAK A/T AT3W	115T	7.5	6.5 - 8.5	211	260	10.3	265	764	50	341	437	2289	RBL
	303279	265	70	16	LT265/70R16 117Q WILDPEAK A/T AT02	117Q	8.0	7.0 - 8.5	212	275	13.0	277	779	65	360	422	2368	OWL
	323876	265	70	16	265/70R16 112T WILDPEAK A/T AT3W	112T	8.0	7.0 - 9.0	220	274	10.8	279	778	44	346	430	2326	RBL
	323834	265	75	16	LT265/75R16 123/120S WILDPEAK A/T AT3W 123/120S		7.5	7.0 - 8.0	207	263	14.1	268	804	80	370	410	2437	RBL
296801	275	70	16	275/70R16 114T WILDPEAK A/T AT01	114T	8.0	7.0 - 9.0	212	282	10.6	283	790	44	364	417	2396		
323840	285	75	16	LT285/75R16 126/123R WILDPEAK A/T AT3W 126/123R		8.0	7.5 - 9.0	222	283	14.6	288	834	80	383	396	2527	RBL	
323903	305	70	16	LT305/70R16 124/121R WILDPEAK A/T AT3W 124/121R		9.0	8.0 - 9.5	246	307	15.1	312	834	65	383	396	2527	RBL	

OWL: Outlined White-sidewall Letters
RBL: Raised Black-sidewall Letters

Wheel Dia. (in)	M-Code	Width	Series	Wheel Dia.	Size Description	LI/SS	Suggested Rim Width (in)	Rim Width Range (in)	Tread Width (mm)	Section Width (mm)	Tread Depth (mm)	Overall Width (mm)	Overall Dia. (mm)	Max Air (psi)	Static Loaded Radius (mm)	Revs per km	Rolling Circ. (mm)	Sidewall Type
17	296841	215	60	17	215/60R17 96H WILDPEAK A/T AT01	96H	6.5	6.0 - 7.5	176	219	8.2	220	691		323	476	2103	-
	323862	245	65	17	245/65R17 111T XL WILDPEAK A/T AT3W	111T	7.0	7.0 - 8.5	206	246	10.3	251	750	50	337	447	2237	RBL
	323830	245	70	17	LT245/70R17 119/116S WILDPEAK A/T AT3W 119/116S		7.0	6.5 - 8.0	203	248	13.6	253	782	80	363	420	2380	RBL
	323832	245	75	17	LT245/75R17 121/118S WILDPEAK A/T AT3W 121/118S		7.0	6.5 - 7.5	191	242	13.6	247	805	80	373	408	2449	RBL
	323869	255	65	17	255/65R17 114T XL WILDPEAK A/T AT3W	114T	7.5	7.0 - 9.0	214	262	10.3	267	764	50	342	440	2274	RBL
	323874	265	65	17	265/65R17 116T XL WILDPEAK A/T AT3W	116T	8.0	7.5 - 9.5	223	269	10.3	274	776	50	347	433	2310	RBL
	323833	265	70	17	LT265/70R17 121/118S WILDPEAK A/T AT3W 121/118S		8.0	7.0 - 8.5	220	273	14.1	278	810	80	375	406	2463	RBL
	296829	275	65	17	275/65R17 115H WILDPEAK A/T AT01	115H	8.0	7.5 - 9.5	218	279	9.5	280	791	51	365	418	2395	-
	323839	285	70	17	LT285/70R17 121/118S WILDPEAK A/T AT3W 121/118S		8.5	7.5 - 9.0	236	294	14.6	299	838	80	387	393	2546	RBL
	303285	-	-	17	33X12.50R17LT 114S WILDPEAK A/T AT02	114S	10.0	8.5 - 11.0	256	321	13.4	321	824	50	380	404	2474	-
18	323873	265	60	18	265/60R18 114T XL WILDPEAK A/T AT3W	114T	8.0	7.5 - 9.5	217	267	10.3	272	776	50	350	431	2320	RBL
	323879	265	70	18	265/70R18 116T WILDPEAK A/T AT3W	116T	8.0	7.0 - 9.0	220	274	10.8	279	829	44	372	402	2489	RBL
	323912	275	65	18	LT275/65R18 123/120S WILDPEAK A/T AT3W 123/120S		8.0	7.5 - 9.0	230	273	14.6	278	815	80	377	405	2470	RBL
	296781	285	60	18	285/60R18 120H XL WILDPEAK A/T AT01	120H	8.5	8.0 - 10.0	228	290	9.1	291	802	50	372	411	2435	-
	323838	285	65	18	LT285/65R18 125/122S WILDPEAK A/T AT3W 125/122S		8.5	8.0 - 10.0	239	287	14.6	292	827	80	382	399	2505	RBL
20	288917	285	50	20	285/50R20 116T RF WILDPEAK A/T AT01	116T	9.0	8.0 - 10.0	237	285	10.6	287	795	50	363	419	2389	-

OWL: Outlined White-sidewall Letters
RBL: Raised Black-sidewall Letters